



The Drive, West Finchley, N3 1AE
Guide Price £550,000 Share of Freehold Council Tax Band E

REAL ESTATES
Est. 1981

Estate Agents · Residential Sales · Investments · Lettings

Real Estates are delighted to bring to the market this 2 DOUBLE BEDROOM apartment set in the iconic GRADE II LISTED Cedar Court, accessed via a GATED DRIVEWAY with residents parking and surrounded by stunning COMMUNAL GARDENS.

This SHARE OF FREEHOLD property offers an abundance of character throughout, including sash windows and fireplaces. There is a large separate kitchen with space to eat, two excellent sized bedrooms and a modern bathroom. The dual aspect lounge features a bay window with views of the grounds. Balconies off the master bedroom and kitchen provide ample private outside space.

Cedar Court is a unique building in a quiet, secluded location just a stone's throw away from West Finchley Northern Line Underground Station whilst the shops, cafes and restaurants of Ballards Lane are within easy reach.

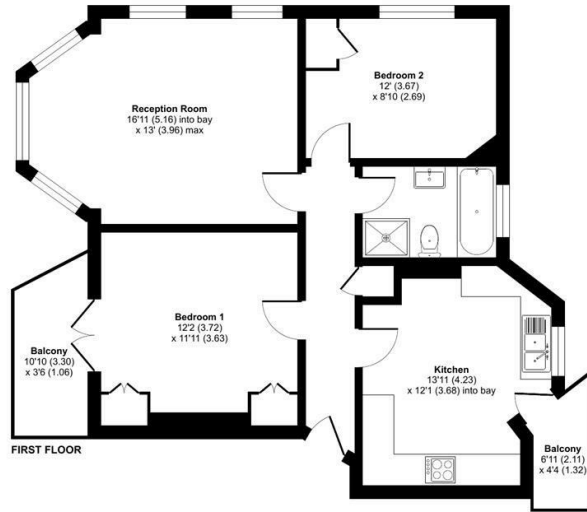
SHARE OF FREEHOLD. Service Charge: £330 pm. Lease 949 years. Ground Rent £0. Sole Agent





Cedar Court, The Drive, London, N3

Approximate Area = 747 sq ft / 69.3 sq m
For identification only - Not to scale



Floor plan produced in accordance with RICS Property Measurement 2nd Edition, incorporating International Property Measurement Standards (IPMS2 Residential). © nrichcom 2025. Produced for Real Estates. REF: 1295568

Energy Efficiency Rating		Current	Potential
Very energy efficient - lower running costs	A		
Energy efficient - lower running costs	B		
Decent energy efficiency - lower running costs	C	70	82
Below average energy efficiency - higher running costs	D		
Energy inefficient - higher running costs	E		
Very energy inefficient - higher running costs	F		
Very poor energy efficiency - higher running costs	G		

EU Directive



Real Estates Woodside Park Office:
14/14a Sussex Ring
Woodside Park N12 7HX

ll : 020 8445 6387
e : info@realestates-wsp.co.uk
w : www.realestates-wsp.co.uk